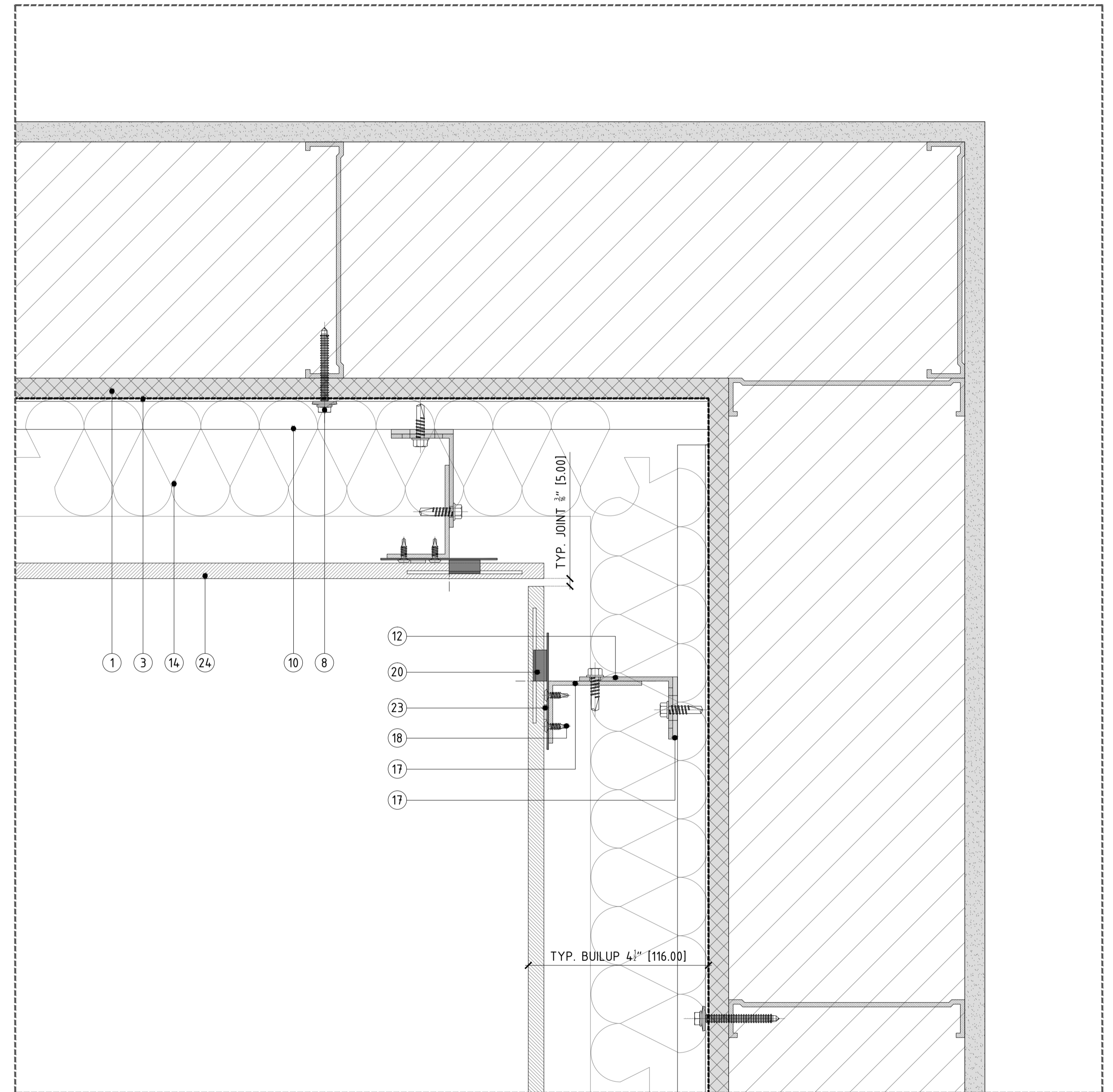
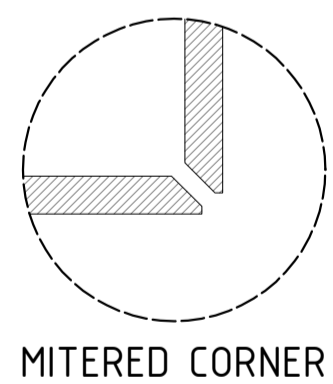
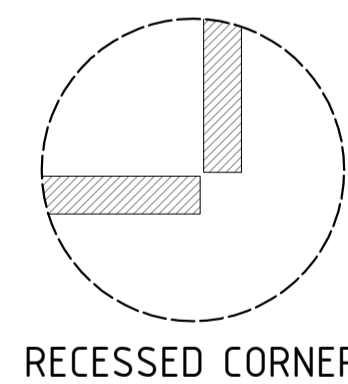
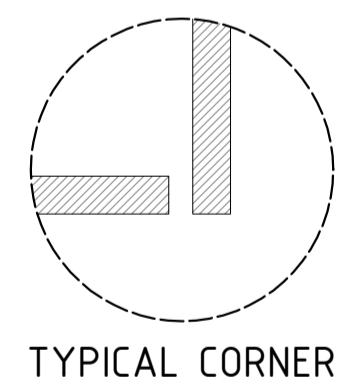


DETAIL A - TYPICAL EXTERNAL CORNER DETAIL

1. EXTERIOR STUD WALL: DRY WALL, METAL/WOOD STUDS, SHEATING; BY OTHERS
2. EXTERIOR SOLID WALL: CMU/BRICK MASONRY/REINFORCED CONCRETE; BY OTHERS
3. DAMP-PROOF COARSE (DPC); BY OTHERS; RECOMMENDED OPTIONS: (1) TREMO EZZO AIR 230 FOR AIR/WATER BARRIER (ROLL/LIQUID APPLIED), (2) HENRY BLUESKIN SA FOR AIR/VAPOR/WATER BARRIER (PEEL&STICK), (3) GRADE ICE AND WATER SHIELD FOR WIND DRIVEN RAIN AND ICE DAMS (PEEL&STICK).
4. WINDOW SYSTEM; BY OTHERS
5. FOR CMU WALL: HIT-MM PLUS (CHEMICAL ANCHOR), HIT SC M16X85 (SLEEVE) & HIT-V M10X95 (THREADED ROD) STAINLESS/GALVANISED STEEL SCREW
6. FOR REINFORCED CONCRETE: HSA-M10 STAINLESS/GALVANISED STEEL SCREW
7. FOR BRICK MASONRY: HRD-H-10x80 (ANCHORAGE PLUG) & HRD-H-10x80 (ANCHORAGE BOLT) STAINLESS/GALVANISED STEEL SCREW
8. FOR METAL STUD: S-MD555 5.5x50 STAINLESS STEEL SELF DRILLING SCREW
9. FOR WOOD STUD: 6x50-DIN 571 STAINLESS STEEL SELF DRILLING SCREW
10. ALUMINUM OMEGA PROFILE 20x140MM (3/4"x5 1/2") 3M (118 1/4") LONG
11. SINGLE/DOUBLE THERMAL ISOLATORS (PLASTIC PAD)
12. SINGLE ALUMINUM L-BRACKET; TYP. LENGHT 60MM (2 3/8")
13. DOUBLE ALUMINUM L-BRACKET; TYP. LENGHT 60MM (2 3/8")
14. THERMAL INSULATION SPECIFICALLY ENGINEERED FOR CAVITY WALL APPLICATIONS; BY OTHERS; RECOMMENDED OPTIONS: (1) ROXUL CAVITYROCK DD (STONE WOOL), IS A DUAL DENSITY INSULATION BOARD WITH A HIGH-DENSITY OUTER LAYER, (2) THERMAX, IS A GLASS-FIBER-REINFORCED POLYISOCYANURATE FOAM CORE FACED WITH THERMOSEER-COATED ALUMINUM ON ONE SIDE AND ALUMINUM ON THE OTHER.
15. FOR L-BRACKET/PROFILE: LT SELF DRILLING SCREW
16. POWDER COATED (BLACK) ALUMINUM T-PROFILE, 100x60x2.7MM (3 15/16"x2 3/8"x1/8") 3M (118 1/4") LONG
17. POWDER COATED (BLACK) ALUMINUM L-PROFILE, 40x60x2.7MM (1 5/8"x2 3/8"x1/8") 3M (118 1/4") LONG
18. FOR FIXING CLIP/PROFILE: STAINLESS STEEL SELF DRILLING SCREW
19. INVISIBLE/VISIBLE CENTRAL STAINLESS STEEL FIXING PLATE, TYP. 5MM (3/16") JOINT, ALSO AVAILABLE FOR 8MM (5/16")
20. INVISIBLE/VISIBLE LATERAL STAINLESS STEEL FIXING PLATE, TYP. 5MM (3/16") JOINT, ALSO AVAILABLE FOR 8MM (5/16")
21. INVISIBLE/VISIBLE START/END FIXING PLATE
22. INVISIBLE/VISIBLE STAGGERED STAINLESS STEEL FIXING PLATE, TYP. 5MM (3/16") JOINT, ALSO AVAILABLE FOR 8MM (5/16")
23. BLACK POLYURETHENE STRUCTURAL SILICON-P-404
24. PORCELAIN TILE, PORCELANOSA, VENIS OR URBATEK COLLECTION.
25. ALUMINUM FLASHING; BY OTHERS



DETAIL B - TYPICAL INTERNAL CORNER DETAIL



TYPICAL CORNER

RECESSED CORNER

MITERED CORNER

revision		important note		shop drawings review		drawing title		drawing no.		revision	
A		UNLESS OTHERWISE SPECIFIED DIMENSIONS ARE TO FACE UNLESS NOTED OTHERWISE. ALL DIMENSIONS TO BE REVERSED UNLESS NOTED OTHERWISE. THIS DRAWING IS TO BE READ IN CONJUNCTION WITH ALL OTHER RELEVANT DRAWINGS. ANY DISCREPANCIES TO BE BROUGHT TO THE ATTENTION OF THE RELEVANT ENGINEER.		drawing reviewed by:		BANK OF DETAILS		VFS - PORCELAIN TILE CLADDING CORNER DETAILS		113	
B	15/02	IV/JC			PORCELANOSA USA		architect		status		A
C							reference		drawn		
D							scale		checked		
								HALF SIZE @Arch D		3"x1'-0" @Arch B	