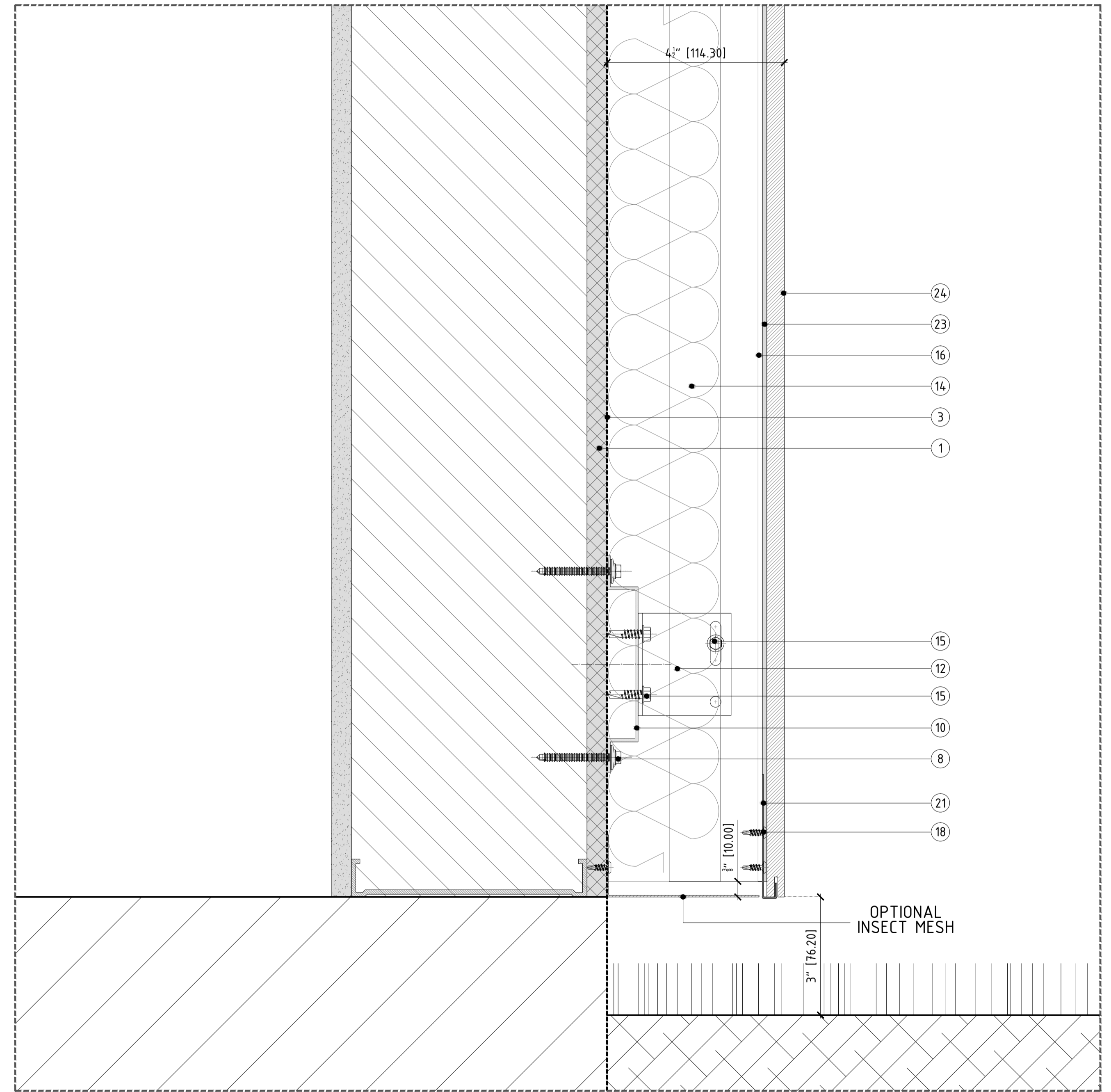


DETAIL A - TYPICAL DETAIL WITH HARD SURFACE

1. EXTERIOR STUD WALL: DRY WALL, METAL/WOOD STUDS, SHEATING; BY OTHERS
2. EXTERIOR SOLID WALL: CMU/BRICK MASONRY/REINFORCED CONCRETE; BY OTHERS
3. DAMP-PROOF COARSE (DPC); BY OTHERS; RECOMMENDED OPTIONS: (1) TREMO EZD AIR 230 FOR AIR/WATER BARRIER (ROLL/LIQUID APPLIED), (2) HENRY BLUESKIN SA FOR AIR/VAPOR/WATER BARRIER (PEEL&STICK), (3) GRADE ICE AND WATER SHIELD FOR WIND DRIVEN RAIN AND ICE DAMS (PEEL&STICK).
4. WINDOW SYSTEM; BY OTHERS
5. FOR CMU WALL: HIT-V-5.8 M8x110 (THREADED ROD) & HIT-SC 16x85 (CHEMICAL ANCHOR SLEEVE) STAINLESS/GALVANISED STEEL SCREW
6. FOR REINFORCED CONCRETE: HRD-U8/10 STAINLESS/GALVANISED STEEL SCREW
7. FOR BRICK MASONRY: HRD-H-10x80 (ANCHORAGE PLUG) & HRD-H-10x80 (ANCHORAGE BOLT) STAINLESS/GALVANISED STEEL SCREW
8. FOR METAL STUD: S-MD555 5.5x50 STAINLESS STEEL SELF DRILLING SCREW
9. FOR WOOD STUD: 6x50-DIN 571 STAINLESS STEEL SELF DRILLING SCREW
10. ALUMINUM OMEGA PROFILE 20x140MM (3/4"x5 1/2") 3M (118 1/2") LONG
11. SINGLE/DOUBLE THERMAL ISOLATORS (PLASTIC PAD)
12. SINGLE ALUMINUM L-BRACKET; TYP. LENGHT 60MM (2 3/8")
13. DOUBLE ALUMINUM L-BRACKET; TYP. LENGHT 60MM (2 3/8")
14. THERMAL INSULATION SPECIFICALLY ENGINEERED FOR CAVITY WALL APPLICATIONS; BY OTHERS; RECOMMENDED OPTIONS: (1) ROXUL CAVITYROCK DD (STONE WOOL), IS A DUAL DENSITY INSULATION BOARD WITH A HIGH-DENSITY OUTER LAYER, (2) THERMAX, IS A GLASS-FIBER-REINFORCED POLYISOCYANURATE FOAM CORE FACED WITH THERMOSEAL-COATED ALUMINUM ON ONE SIDE AND ALUMINUM ON THE OTHER.
15. FOR L-BRACKET/PROFILE: LT SELF DRILLING SCREW
16. POWDER COATED (BLACK) ALUMINUM T-PROFILE, 100x60x2.7MM (3 15/16"x2 3/8"x1/4"), 3M (118 1/2") LONG
17. POWDER COATED (BLACK) ALUMINUM L-PROFILE, 40x60x2.7MM (1 1/2"x2 3/8"x1/4"), 3M (118 1/2") LONG
18. FOR FIXING CLIP/PROFILE: STAINLESS STEEL SELF DRILLING SCREW
19. INVISIBLE/VISIBLE CENTRAL STAINLESS STEEL FIXING PLATE, TYP. 5MM (3/16") JOINT, ALSO AVAILABLE FOR 8MM (5/16")
20. INVISIBLE/VISIBLE LATERAL STAINLESS STEEL FIXING PLATE, TYP. 5MM (3/16") JOINT, ALSO AVAILABLE FOR 8MM (5/16")
21. INVISIBLE/VISIBLE START/END FIXING PLATE
22. INVISIBLE/VISIBLE STAGGERED STAINLESS STEEL FIXING PLATE, TYP. 5MM (3/16") JOINT, ALSO AVAILABLE FOR 8MM (5/16")
23. BLACK POLYURETHENE STRUCTURAL SILICON-P-404
24. PORCELAIN TILE, PORCELANOSA, VENIS OR URBATEK COLLECTION.
25. ALUMINUM FLASHING; BY OTHERS



DETAIL B - TYPICAL DETAIL WITH SOFT LANDSCAPE SURFACE

revision	15/01	IV/JC
A		
B		
C		
D		

important note
 UNDER NO CIRCUMSTANCES SHOULD DIMENSIONS BE SCALED FROM THIS DRAWING. "IF IN DOUBT ASK"
 COPYRIGHT AND DISTRIBUTION TO THIRD PARTIES PROHIBITED.
 ALL DIMENSIONS TO BE REVERSED UNLESS
 THIS DRAWING IS TO BE READ IN CONJUNCTION WITH ALL OTHER RELEVANT DRAWINGS. ANY
 DISCREPANCIES TO BE BROUGHT TO THE ATTENTION OF THE RELEVANT ENGINEER

shop drawings review

status	status	status	date reviewed
A	B	C	

drawing reviewed by:

PORCELANOSA USA

job title	status	reference
BANK OF DETAILS		
architect		

drawing title	drawn	checked	scale
VFS - PORCELAIN TILE CLADDING DETAIL WITH PAVEMENT	JC	IV	HALF SIZE @Arch D 3"x1'-0" @Arch B

drawing no. **111**

revision **A**