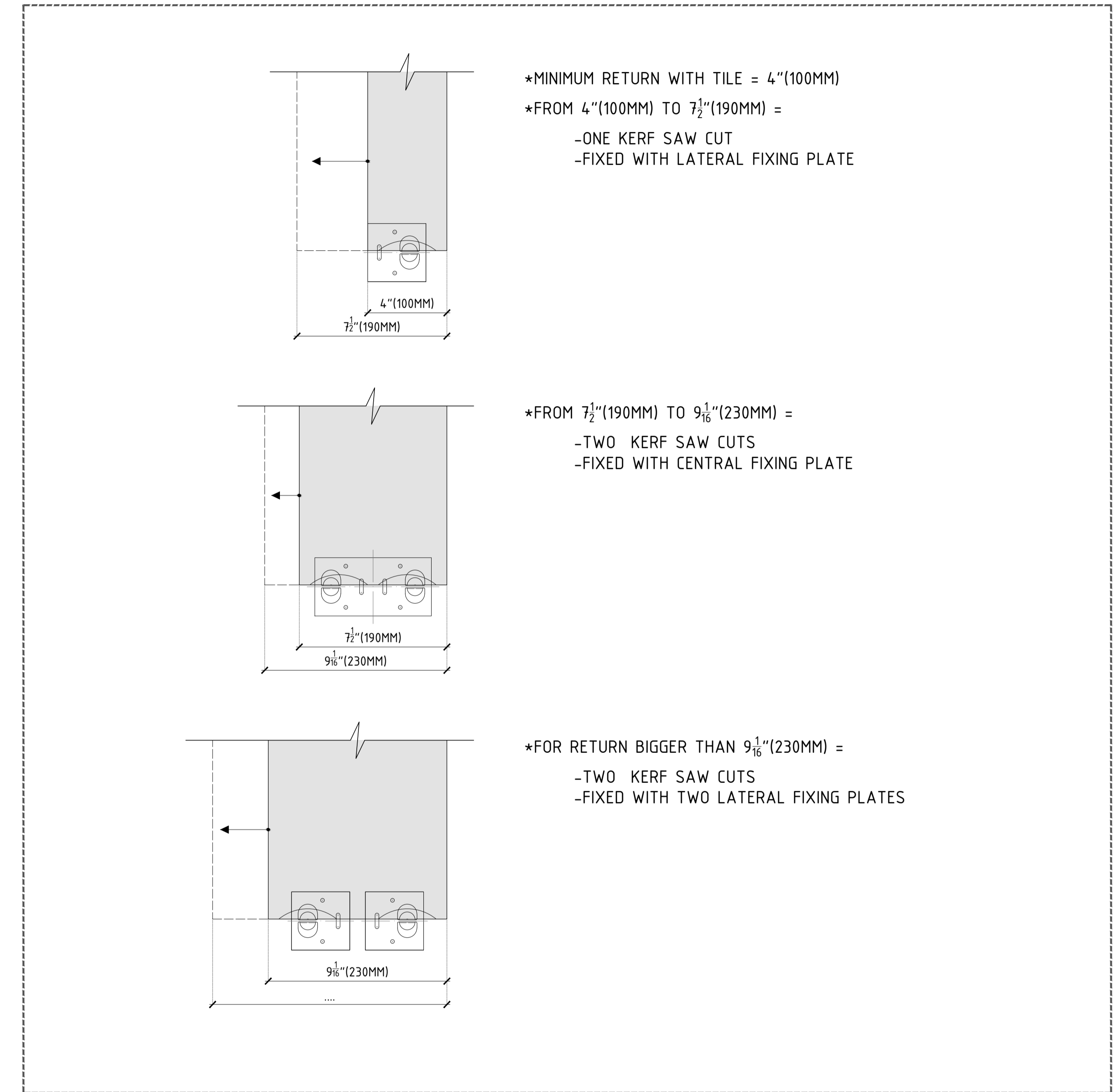


DETAIL A - TYPICAL WINDOW JAMB DETAIL WITH TILE RETURN

TYP. BUILDUP 4 1/2" [116.00]

1. EXTERIOR STUD WALL: DRY WALL, METAL/WOOD STUDS, SHEATING; BY OTHERS
2. EXTERIOR SOLID WALL: CMU/BRICK MASONRY/REINFORCED CONCRETE; BY OTHERS
3. DAMP-PROOF COARSE (DPC); BY OTHERS; RECOMMENDED OPTIONS: (1) TREMO E20 AIR 230 FOR AIR/WATER BARRIER (ROLL/LIQUID APPLIED), (2) HENRY BLUESKIN SA FOR AIR/VAPOR/WATER BARRIER (PEEL&STICK), (3) GRADE ICE AND WATER SHIELD FOR WIND DRIVEN RAIN AND ICE DAMS (PEEL&STICK).
4. WINDOW SYSTEM; BY OTHERS
5. FOR CMU WALL: HIT-MM PLUS (CHEMICAL ANCHOR), HIT SC M16X85 (SLEEVE) & HIT-V M10X95 (THREADED ROD) STAINLESS/GALVANISED STEEL SCREW
6. FOR REINFORCED CONCRETE: HSA-M10 STAINLESS/GALVANISED STEEL SCREW
7. FOR BRICK MASONRY: HRD-H-10x80 (ANCHORAGE PLUG) & HRD-H-10x80 (ANCHORAGE BOLT) STAINLESS/GALVANISED STEEL SCREW
8. FOR METAL STUD: S-MD555 5.5x50 STAINLESS STEEL SELF DRILLING SCREW
9. FOR WOOD STUD: 6x50-DIN 571 STAINLESS STEEL SELF DRILLING SCREW
10. ALUMINUM OMEGA PROFILE 20x140MM (3/4"x5 1/2") 3M (118g) LONG
11. SINGLE/DOUBLE THERMAL ISOLATORS (PLASTIC PAD)
12. SINGLE ALUMINUM L-BRACKET; TYP. LENGHT 60MM (2 3/8")
13. DOUBLE ALUMINUM L-BRACKET; TYP. LENGHT 60MM (2 3/8")
14. THERMAL INSULATION SPECIFICALLY ENGINEERED FOR CAVITY WALL APPLICATIONS, BY OTHERS; RECOMMENDED OPTIONS: (1) ROXUL CAVITYROCK DD (STONE WOOL), IS A DUAL DENSITY INSULATION BOARD WITH A HIGH-DENSITY OUTER LAYER, (2) THERMAX, IS A GLASS-FIBER-REINFORCED POLYISOCYANURATE FOAM CORE FACED WITH THERMOSEER-COATED ALUMINUM ON ONE SIDE AND ALUMINUM ON THE OTHER.
15. FOR L-BRACKET/PROFILE: LT SELF DRILLING SCREW
16. POWDER COATED (BLACK) ALUMINUM T-PROFILE, 100x60x2.7MM (3 15/16"x2 3/8"x1/8"), 3M (118g) LONG
17. POWDER COATED (BLACK) ALUMINUM L-PROFILE, 40x60x2.7MM (1 13/16"x2 3/8"x1/8"), 3M (118g) LONG
18. FOR FIXING CLIP/PROFILE: STAINLESS STEEL SELF DRILLING SCREW
19. INVISIBLE/VISIBLE CENTRAL STAINLESS STEEL FIXING PLATE, TYP. 5MM (3/16") JOINT, ALSO AVAILABLE FOR 8MM (5/16")
20. INVISIBLE/VISIBLE LATERAL STAINLESS STEEL FIXING PLATE, TYP. 5MM (3/16") JOINT, ALSO AVAILABLE FOR 8MM (5/16")
21. INVISIBLE/VISIBLE START/END FIXING PLATE
22. INVISIBLE/VISIBLE STAGGERED STAINLESS STEEL FIXING PLATE, TYP. 5MM (3/16") JOINT, ALSO AVAILABLE FOR 8MM (5/16")
23. BLACK POLYURETHENE STRUCTURAL SILICON-P-404
24. PORCELAIN TILE, PORCELANOSA, VENIS OR URBATEK COLLECTION.
25. ALUMINUM FLASHING; BY OTHERS



WINDOW RETURN FIXING CRITERIA

*MINIMUM RETURN WITH TILE = 4" (100MM)
 *FROM 4" (100MM) TO 7 1/2" (190MM) =
 -ONE KERF SAW CUT
 -FIXED WITH LATERAL FIXING PLATE

*FROM 7 1/2" (190MM) TO 9 1/8" (230MM) =
 -TWO KERF SAW CUTS
 -FIXED WITH CENTRAL FIXING PLATE

*FOR RETURN BIGGER THAN 9 1/8" (230MM) =
 -TWO KERF SAW CUTS
 -FIXED WITH TWO LATERAL FIXING PLATES

revision		important note		shop drawings review		drawing title		drawing no.		revision	
A		UNLESS IN CIRCUMSTANCES, DIMENSIONS BE SCALED FROM THIS DRAWING. "IF IN DOUBT ASK" COPYRIGHT AND DISTRIBUTION TO THIRD PARTIES PROHIBITED. ALL DIMENSIONS TO BE REVERSED UNLESS NOTED. THIS DRAWING IS TO BE READ IN CONJUNCTION WITH ALL OTHER RELEVANT DRAWINGS. ANY DISCREPANCIES TO BE BROUGHT TO THE ATTENTION OF THE RELEVANT ENGINEER.		drawing reviewed by:		BANK OF DETAILS		VFS - PORCELAIN TILE CLADDING TYPICAL DETAILS WINDOW FLUSH WITH BACK WALL		103	
B				status A status B status C date reviewed		architect		drawn J.C. checked I.V. scale HALF SIZE @Arch D 3"x1'-0" @Arch B		A	
C						status		reference			

PORCELANOSA USA