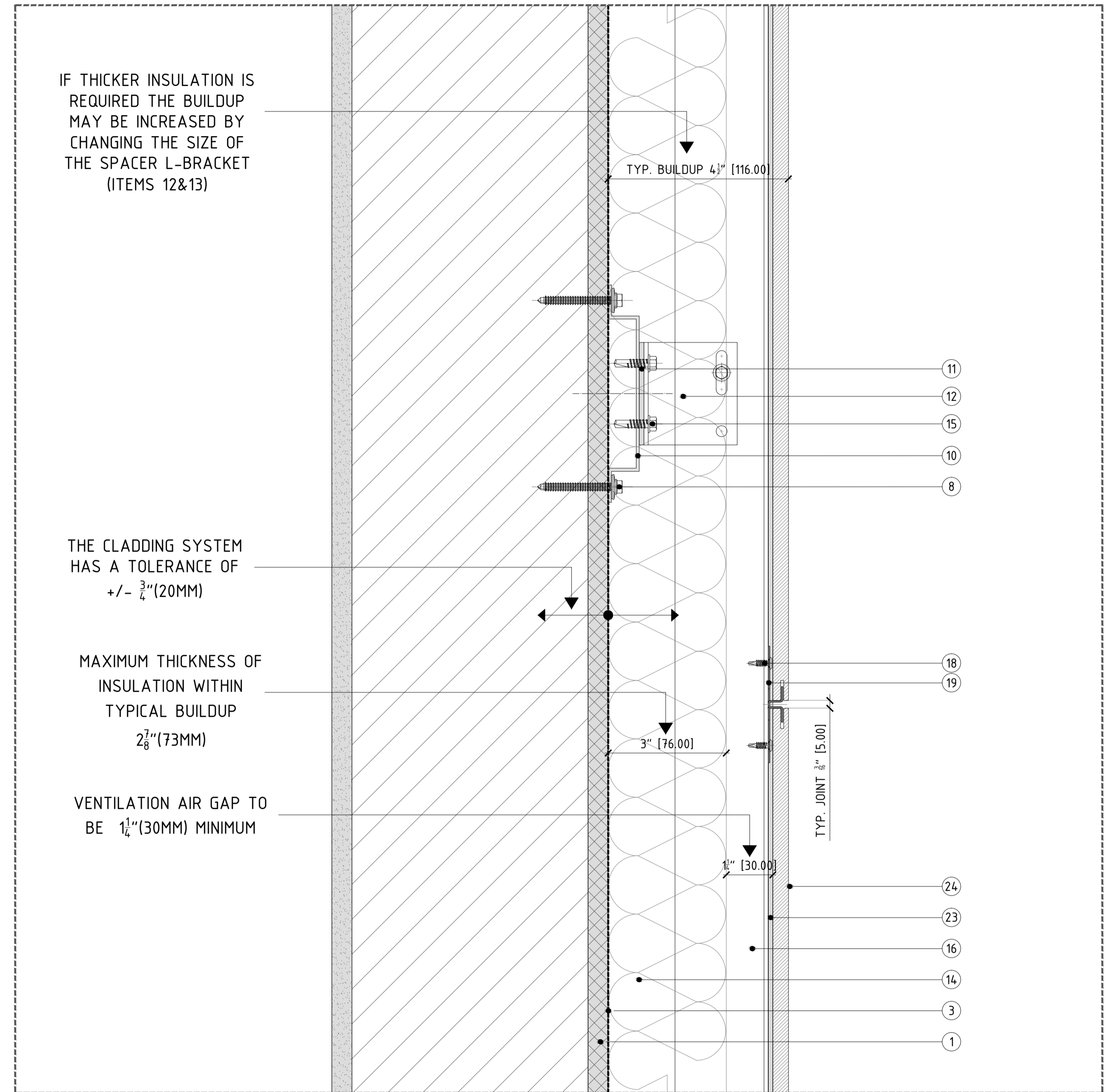


DETAIL A - TYPICAL HORIZONTAL DETAIL WITH STUD WALL

\*TYPICAL BUILDUP 4 1/4" (116MM)  
 \*VENTILATION AIR GAP TO BE 1 1/4" (30MM) MINIMUM

1. EXTERIOR STUD WALL: DRY WALL, METAL/WOOD STUDS, SHEATING; BY OTHERS
2. EXTERIOR SOLID WALL: CMU/BRICK MASONRY/REINFORCED CONCRETE; BY OTHERS
3. DAMP-PROOF COARSE (DPC); BY OTHERS; RECOMMENDED OPTIONS: (1) TREMO E20 AIR 230 FOR AIR/WATER BARRIER (ROLL/LIQUID APPLIED), (2) HENRY BLUESKIN SA FOR AIR/VAPOR/WATER BARRIER (PEEL&STICK), (3) GRADE ICE AND WATER SHIELD FOR WIND DRIVEN RAIN AND ICE DAMS (PEEL&STICK).
4. WINDOW SYSTEM; BY OTHERS
5. FOR CMU WALL: HIT-MM PLUS (CHEMICAL ANCHOR), HIT SC M16X85 (SLEEVE) & HIT-V M10X95 (THREADED ROD) STAINLESS/GALVANISED STEEL SCREW
6. FOR REINFORCED CONCRETE: HSA-M10 STAINLESS/GALVANISED STEEL SCREW
7. FOR BRICK MASONRY: HRD-H-10x80 (ANCHORAGE PLUG) & HRD-H-10x80 (ANCHORAGE BOLT) STAINLESS/GALVANISED STEEL SCREW
8. FOR METAL STUD: S-MD555 5.5x50 STAINLESS STEEL SELF DRILLING SCREW
9. FOR WOOD STUD: 6x50-DIN 571 STAINLESS STEEL SELF DRILLING SCREW
10. ALUMINUM OMEGA PROFILE 20x140MM (3/8"x5 1/2") 3M (118") LONG
11. SINGLE/DOUBLE THERMAL ISOLATORS (PLASTIC PAD)
12. SINGLE ALUMINUM L-BRACKET; TYP. LENGHT 60MM (2 3/8")
13. DOUBLE ALUMINUM L-BRACKET; TYP. LENGHT 60MM (2 3/8")
14. THERMAL INSULATION SPECIFICALLY ENGINEERED FOR CAVITY WALL APPLICATIONS; BY OTHERS; RECOMMENDED OPTIONS: (1) ROXUL CAVITYROCK DD (STONE WOOL), IS A DUAL DENSITY INSULATION BOARD WITH A HIGH-DENSITY OUTER LAYER, (2) THERMAX, IS A GLASS-FIBER-REINFORCED POLYISOCYANURATE FOAM CORE FACED WITH THERMOSEER-COATED ALUMINUM ON ONE SIDE AND ALUMINUM ON THE OTHER.
15. FOR L-BRACKET/PROFILE: LT SELF DRILLING SCREW
16. POWDER COATED (BLACK) ALUMINUM T-PROFILE, 100x60x2.7MM (3 15/16"x2 3/8"x1/8"), 3M (118") LONG
17. POWDER COATED (BLACK) ALUMINUM L-PROFILE, 40x60x2.7MM (1 13/16"x2 3/8"x1/8"), 3M (118") LONG
18. FOR FIXING CLIP/PROFILE: STAINLESS STEEL SELF DRILLING SCREW
19. INVISIBLE/VISIBLE CENTRAL STAINLESS STEEL FIXING PLATE, TYP. 5MM (3/16") JOINT, ALSO AVAILABLE FOR 8MM (5/16")
20. INVISIBLE/VISIBLE LATERAL STAINLESS STEEL FIXING PLATE, TYP. 5MM (3/16") JOINT, ALSO AVAILABLE FOR 8MM (5/16")
21. INVISIBLE/VISIBLE START/END FIXING PLATE
22. INVISIBLE/VISIBLE STAGGERED STAINLESS STEEL FIXING PLATE, TYP. 5MM (3/16") JOINT, ALSO AVAILABLE FOR 8MM (5/16")
23. BLACK POLYURETHENE STRUCTURAL SILICON-P-404
24. PORCELAIN TILE, PORCELANOSA, VENIS OR URBATEK COLLECTION.
25. ALUMINUM FLASHING; BY OTHERS



DETAIL B - TYPICAL VERTICAL DETAIL WITH STUD WALL

revision		important note		shop drawings review		drawing title		drawing no.		revision	
A		UNLESS IN CIRCUMSTANCES SHOWN DIMENSIONS BE SCALED FROM THIS DRAWING. "IF IN DOUBT ASK" COPYRIGHT AND DISTRIBUTION TO THIRD PARTIES PROHIBITED. ALL DIMENSIONS TO BE RECEIVED ON-SITE. THIS DRAWING IS TO BE READ IN CONJUNCTION WITH ALL OTHER RELEVANT DRAWINGS. ANY DISCREPANCIES TO BE BROUGHT TO THE ATTENTION OF THE RELEVANT ENGINEER.		drawing reviewed by: .....		BANK OF DETAILS		VFS - PORCELAIN TILE CLADDING TYPICAL DETAILS STUD WALL		101	
B	15/02			status		architect		drawn		A	
C	IV/JC			status A B C		status		checked			
D				date reviewed		reference		scale		3"=1'-0" @Arch B	

PORCELANOSA USA